

LED-Spot 2000

MGL LICHT

Art.No: MGL 5002

Character:

LED-Spot with EUTRAC/R-3PH-Universal-Adapter
turnable 355° / tiltable 90°

Materials:

Housing: Aluminum die casting

Front trim of optical system with bayonet made from polycarbonate,
Powder coated in white, similar RAL9010

Reflector: Pure aluminum (99,98%)

Diffuser: transparent tempered glass

Lighting technology:

COB Multichip LED, powered 700mA/28W

Luminaire luminous flux: 2160 lm

Color temperature: 3.000K (warm white)

Color rendering: CRI Ra >80

Average service time: 50.000 h / L70 B50

Reflector covered by transparent diffuser glass

Standrad: 40° reflector, changeable without tools

Attachment: MGL0054 20° reflector

Elektronics:

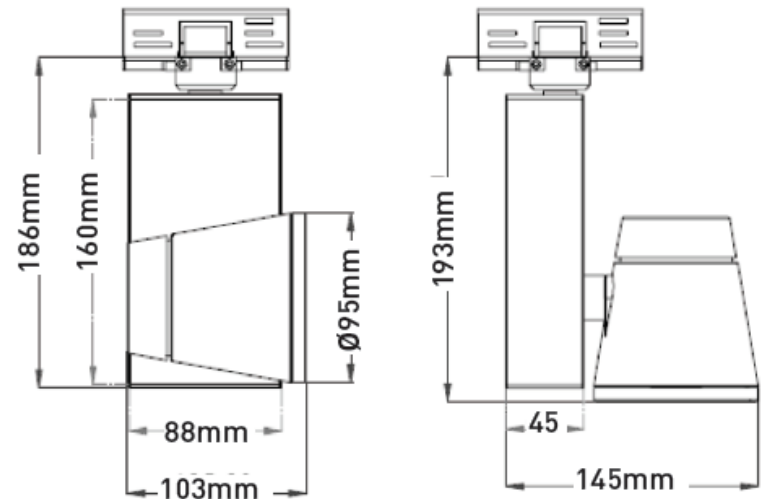
Integrated electronic converter, switchable

Mains voltage 230V 50/60Hz

Electrical class I

Mounting:

Without tools, to be used in combination with all 3 PH track systems, ceiling mounted



ENEC APPROVAL

LED-Spot 2000

MGL LICHT

Art.No: MGL 5003

Character:

LED-Spot with EUTRAC/R-3PH-Universal-Adapter
turnable 355° / tiltable 90°

Materials:

Housing: Aluminum die casting

Front trim of optical system with bayonet made from polycarbonate,
Powder coated in white, similar RAL9010

Reflector: Pure aluminum (99,98%)

Diffuser: transparent tempered glass

Lighting technology:

COB Multichip LED, powered 700mA/28W

Luminaire luminous flux: 2300 lm

Color temperature: 4.000K (neutral white)

Color rendering: CRI Ra >80

Average service time: 50.000 h / L70 B50

Reflector covered by transparent diffuser glass

Standrad: 40° reflector, changeable without tools

Attachment: MGL0054 20° reflector

Elektronics:

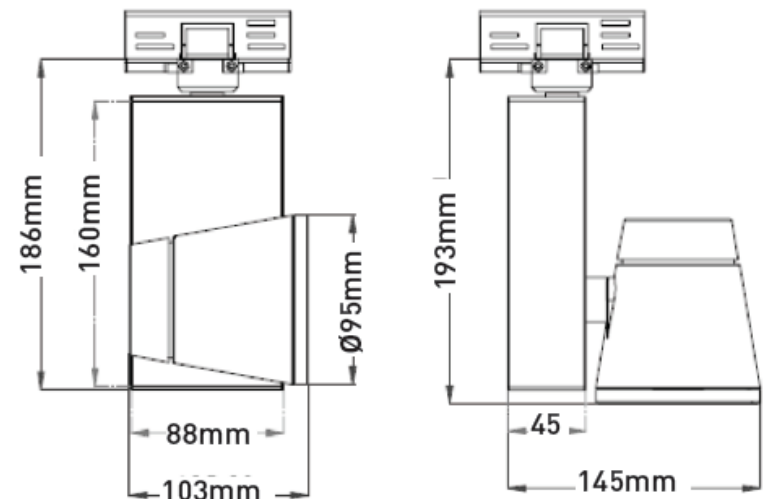
Integrated electronic converter, switchable

Mains voltage 230V 50/60Hz

Electrical class I

Mounting:

Without tools, to be used in combination with all 3 PH track systems, ceiling mounted



ENEC APPROVAL

LED-Spot 2000

MGL LICHT

Art.No: MGL 5004

Character:

LED-Spot with EUTRAC/R-3PH-Universal-Adapter
turnable 355° / tiltable 90°

Materials:

Housing: Aluminum die casting

Front trim of optical system with bayonet made from polycarbonate,
Powder coated in MGL-grey, similar RAL9006

Reflector: Pure aluminum (99,98%)

Diffuser: transparent tempered glass

Lighting technology:

COB Multichip LED, powered 700mA/28W

Luminaire luminous flux: 2160 lm

Color temperature: 3.000K (warm white)

Color rendering: CRI Ra >80

Average service time: 50.000 h / L70 B50

Reflector covered by transparent diffuser glass

Standrad: 40° reflector, changeable without tools

Attachment: MGL0054 20° reflector

Elektronics:

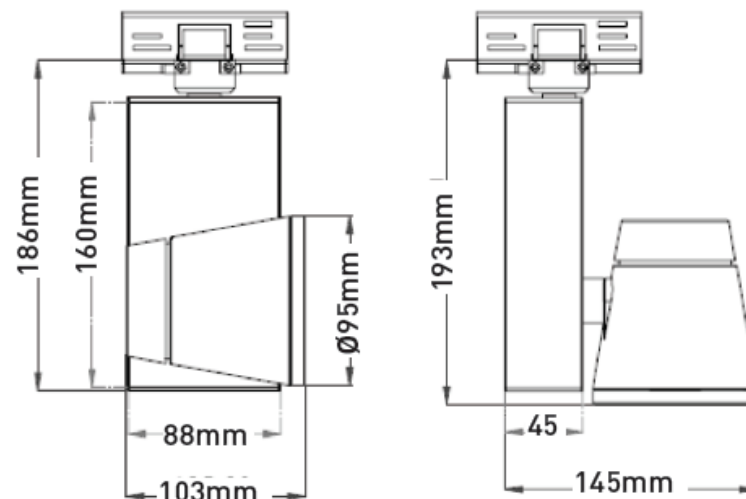
Integrated electronic converter, switchable

Mains voltage 230V 50/60Hz

Electrical class I

Mounting:

Without tools, to be used in combination with all 3 PH track systems, ceiling mounted



ENEC APPROVAL

LED-Spot 2000

MGL LICHT

Art.No: MGL 5005

Character:

LED-Spot with EUTRAC/R-3PH-Universal-Adapter
turnable 355° / tiltable 90°

Materials:

Housing: Aluminum die casting

Front trim of optical system with bayonet made from polycarbonate,

Powder coated in MGL-grey, similar RAL9006

Reflector: Pure aluminum (99,98%)

Diffuser: transparent tempered glass

Lighting technology:

COB Multichip LED, powered 700mA/28W

Luminaire luminous flux: 2300 lm

Color temperature: 4.000K (neutral white)

Color rendering: CRI Ra >80

Average service time: 50.000 h / L70 B50

Reflector covered by transparent diffuser glass

Standrad: 40° reflector, changeable without tools

Attachment: MGL0054 20° reflector

Elektronics:

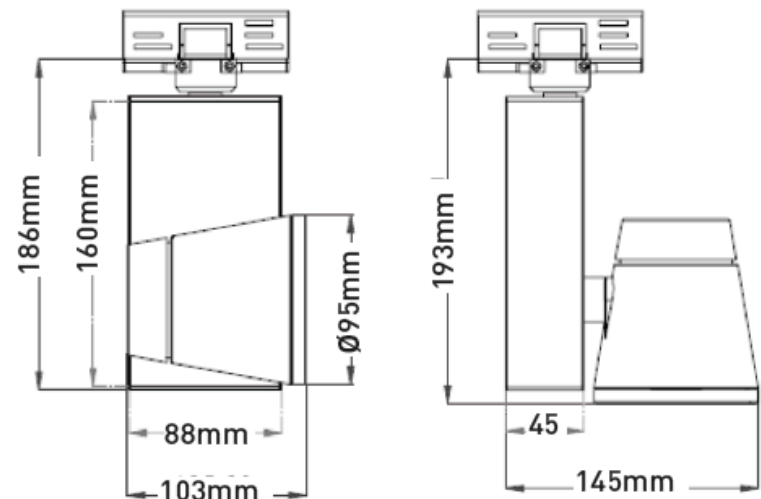
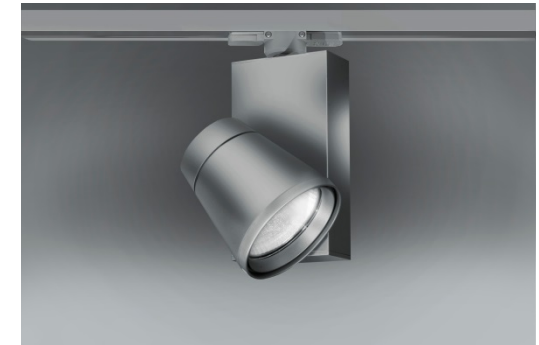
Integrated electronic converter, switchable

Mains voltage 230V 50/60Hz

Electrical class I

Mounting:

Without tools, to be used in combination with all 3 PH track systems, ceiling mounted



ENEC APPROVAL